



# PLUG VALVE

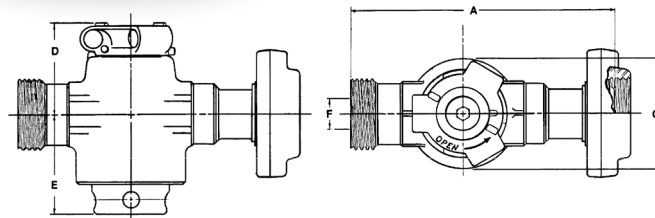


## FEATURES:

Proven Design for Manifolding and Controlling High Pressure Fracturing, Acidizing, Cementing Flowback and Well-Testing

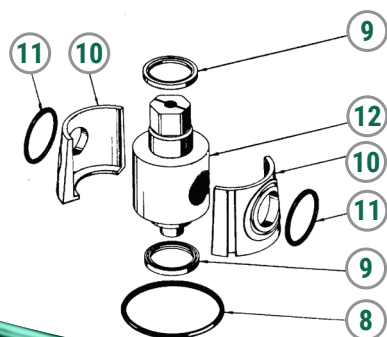
- Low Torque
- 1/4 Turn for open or close
- Connections: Union, Threaded, or Flange Ends
- Parts Interchange with other like OEM's
- Pneumatic or Hydraulic Actuators OPTION
- H2S (NACE) Service OPTION
- In-Line Maintenance or Repair
- Fully Assembled & Tested in America

ISO 9001:2000 Certified  
Certificate No. C2007-01814

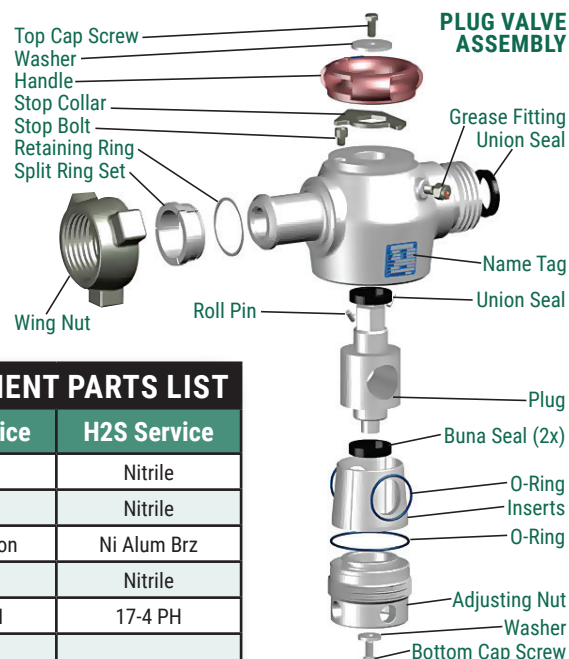


TULSA PLUG VALVE DIMENSIONAL DATA									
Valve Size	End Connections	Working Pressure	Service	Wt	A	D	E	F	G
1"	1" 1502 FxM	*15,000	STANDARD/SOUR	42	10.56	4.69	4.56	1.00	5.38
1"	2" 1502 FxM	*15,000	STANDARD/SOUR	52	10.56	4.69	4.56	1.00	5.38
2"	2" 1502 FxM	*15,000	STANDARD/SOUR	97	13.88	5.34	5.50	2.06	7.00
2"	2"LP FEMALE	*10,000	STANDARD/SOUR	75	8.50	5.34	5.50	2.06	7.00
2"	2 1/16" x BX 152 Flg x Flg	*15,000	STANDARD/SOUR	122	13.5	5.34	5.50	2.06	7.00

\*Sour Service Plug Valves are rated to 10,000 psi



TULSA PLUG VALVE REPLACEMENT PARTS LIST				
No.	Description	Qty	Std Service	H2S Service
8	Adj Nut O-Ring	1	Buna N	Nitrile
9	Plug Stem Seal	2	Buna N	Nitrile
10	Inserts (2 per set)	1	Ductile Iron	Ni Alum Brz
11	Insert O-Ring	2	Buna N	Nitrile
12	Plug	1	17-4 PH	17-4 PH
	Seal Kit 8,9,11	1		
	Repair Kit 8-12	1		



**FIELD PROVEN VALVES PROVIDING YEARS OF  
COST EFFECTIVE, EFFICIENT, SAFE AND RELIABLE SERVICE.**

**TEL: (281) 909-3711 • WWW.TULSAVALVE.COM**



## LEADERS IN THE VALVE INDUSTRY

Tulsa Valve is a USA based OEM for a wide range of commonly used valves. The increasing demands to design valves that are more efficient, along with ease of operation, have put Tulsa Valve into a leading position in the industry.



## GUARANTEED AGAINST DEFECTS



Tulsa Valve products are guaranteed against defects of material workmanship for One (1) Year from date of invoice provided such products are used normally and within the service and pressure range for which they were manufactured. This guarantee is limited to the repair, replacement or repayment of purchase price. Under no conditions will Tulsa Valve be liable for claim of labor for removal, repair or replacement of Tulsa Valve products, or any other consequential damage.

HOUSTON, TEXAS  
TEL: (281) 909-3711 • FAX: (281) 306-2526  
[WWW.TULSAVALVE.COM](http://WWW.TULSAVALVE.COM)